

SCHEDA TECNICA – CAMICE DA UOMO 2ACTIVE

COD. A60114

TESSUTO

Negastat Hydrofoil

Antiacido e antistatico irrestingibile

65% poliestere,

34% cotone,

1% fibra conduttiva

Peso 245 g/m²

SOLO TESSUTO



CE

II^a categoria

EN ISO 13688:2013+A1:2021

rossini.
TECH



EN 1149-5:2018

EN 13034:2005+A1:2009 TIPO 6



01 – BLU



02 – BIANCO



01 – BLU

DESCRIZIONE

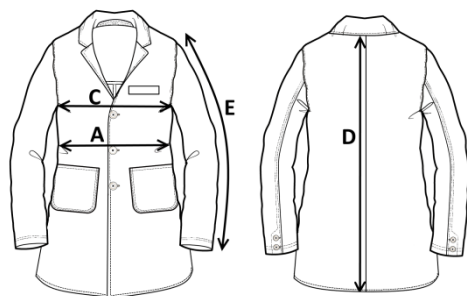
Camice da uomo con chiusura con bottoni automatici coperti.

Un taschino al petto destro con portapenne chiuso con aletta e velcro, due tasche applicate chiuse con aletta e velcro.

Elastico al fondo manica.


TAGLIE

S, M, L, XL, XXL



Il margine di tolleranza produttivo, nel rispetto delle dimensioni della taglia, può essere del +/- 3%

SIZE - cm	S	M	L	XL	XXL
C – ½ CIRCONFERENZA TORACE	56	59	62	65	68
A – ½ CIRCONFERENZA VITA	55	58	61	64	67
D – LUNGHEZZA CENTRO DIETRO	89,5	92	94,5	97	99,5
E – LUNGHEZZA MANICA CON POLSO	64,5	66	67,5	69	70,5

 **TECHNICAL SHEET – 2ACTIVE MEN’S COAT**

CODE A60114

CE

2ND CATEGORY
EN ISO 13688:2013+A1:2021

rossini.
TECH

FABRIC

Negastat Hydrofoil

Acid proof and anti-static, non-shrink

65% polyester,


34% cotton,


1% conductive fiber

Weight 245 g/m²

FABRIC ONLY



 EN 1149-5:2018

 EN 13034:2005+A1:2009 TYPE 6



01 – BLUE



02 – WHITE



01 – BLUE



DESCRIPTION

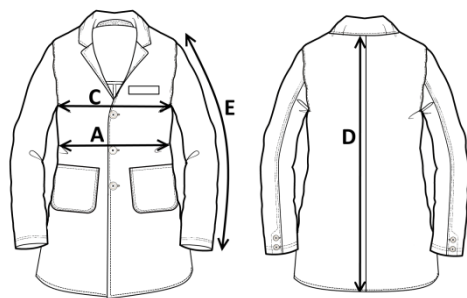
Men's coat with covered snap button closure.

One breast pocket on the right with pen holder closed with flap and Velcro, two patch pockets closed with flap and Velcro.

Elastic at the bottom of the sleeve.

SIZES

S, M, L, XL, XXL



Measurements may vary +/- 3%, tolerance within size scale

SIZE - cm	S	M	L	XL	XXL
C – ½ CHEST CIRCUMFERENCE	56	59	62	65	68
A – ½ WAIST CIRCUMFERENCE	55	58	61	64	67
D – CENTER BACK LENGTH	89,5	92	94,5	97	99,5
E – SLEEVE LENGTH WITH CUFF	64,5	66	67,5	69	70,5

 FICHA TÉCNICA – BATA DE HOMBRE 2ACTIVE

CÓD. A60114

COMPOSICIÓN

Negastat Hydrofoil

Antiácido y antiestático sanforizado

65% poliéster,

34% algodón,

1% fibra conductora

Peso 245 g/m²



DESCRIPCIÓN

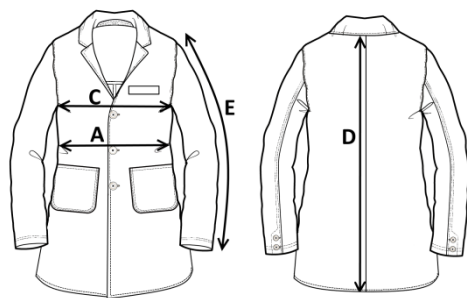
Bata de hombre con cierre de botones automáticos cubiertos.

Un bolsillo a la derecha del pecho con portabolígrafos cerrado con solapa y velcro, dos bolsillos de parche cerrados con solapa y velcro.

Elástico al final de la manga.

TALLAS

S, M, L, XL, XXL





IIª categoría

EN ISO 13688:2013+A1:2021

rossini.
TECH



 EN 1149-5:2018

 EN 13034:2005+A1:2009 TIPO 6



01 – AZUL



02 – BLANCO



01 – AZUL



El margen de tolerancia productiva, respetando las dimensiones de la talla, puede ser de +/- 3%

SIZE - cm	S	M	L	XL	XXL
C – ½ CIRCUNFERENCIA TORÁCICA	56	59	62	65	68
A – ½ CIRCUNFERENCIA DE LA CINTURA	55	58	61	64	67
D – LONGITUD CENTRAL ESPALDA	89,5	92	94,5	97	99,5
E – LONGITUD DE LA MANGA HASTA LA MUÑECA	64,5	66	67,5	69	70,5

FISA TEHNICA – HALAT 2 ACTIVE PENTRU BĂRBAȚI

COD. A60114

MATERIAL

Negastat Hydrofoil

Antiacid și antistatic, nu intră la apă

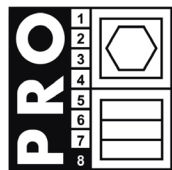
65% poliester,

34% bumbac,

1% fibră conductivă

Greutate 245 g/m²

DOAR MATERIAL



Categoria II
EN ISO 13688:2013+A1:2021

rossini.
TECH



EN 1149-5:2018

EN 13034:2005+A1:2009 TIP 6



01 – BLEUMARIN



02 – ALB



01 – BLEUMARIN

DESCRIERE

Halat bărbați cu închidere cu capse acoperite.

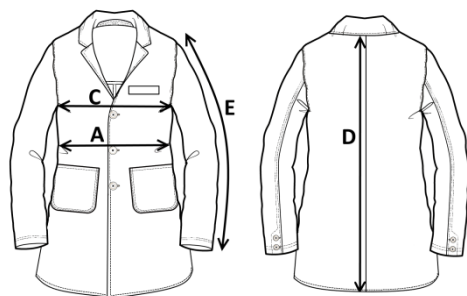
Un buzunar mic pe piept în partea dreaptă,

închis cu clapă și scai, două buzunare inferioare aplicate, închise cu clapă și scai.

Elastic la manșeta mânecii.

MĂRIMI

S, M, L, XL, XXL



Marja de toleranță a producției, respectând dimensiunile mărimii, poate fi de +/-3%.

SIZE - cm	S	M	L	XL	XXL
C – ½ CIRCUMFERINȚĂ TORACE	56	59	62	65	68
A – ½ CIRCUMFERINȚĂ TALIE	55	58	61	64	67
D – LUNGIME SPATE	89,5	92	94,5	97	99,5
E – LUNGIME MÂNECĂ CU MANȘETĂ	64,5	66	67,5	69	70,5

FICHE TECHNIQUE – BLOUSE HOMME 2ACTIVE

CODE A60114



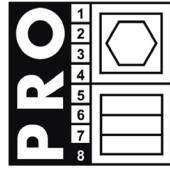
2e catégorie
EN ISO 13688:2013+A1:2021

rossini.
TECH

TISSU

Negastat Hydrofoil,
antiacide et antistatique non rétrécissable,
65% polyester,
34% coton,
1% fibre conductrice.
Poids 245 g/m²

UNIQUEMENT TISSU



EN 1149-5:2018

EN 13034:2005+A1:2009 TYPE 6

DESCRIPTION

Blouse homme avec fermeture avec boutons pression couverts.

Une poche poitrine droite avec porte-stylos fermé par ailette et velcro, deux poches appliquées fermées par ailette et velcro.

Élastique au bas de la manche.

TAILLES

S, M, L, XL, XXL



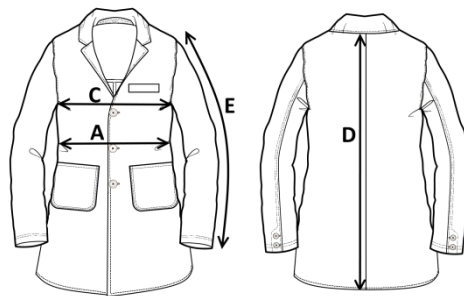
01 – BLEU



02 – BLANC



01 – BLEU



La marge de tolérance de production, dans le respect des dimensions de la taille, peut être de +/- 3 %

SIZE - cm	S	M	L	XL	XXL
C – ½ TOUR DE POITRINE	56	59	62	65	68
A – ½ TOUR DE TAILLE	55	58	61	64	67
D – LONGUEUR CENTRE ARRIERE	89,5	92	94,5	97	99,5
E – LONGUEUR MANCHE AVEC POIGNET	64,5	66	67,5	69	70,5